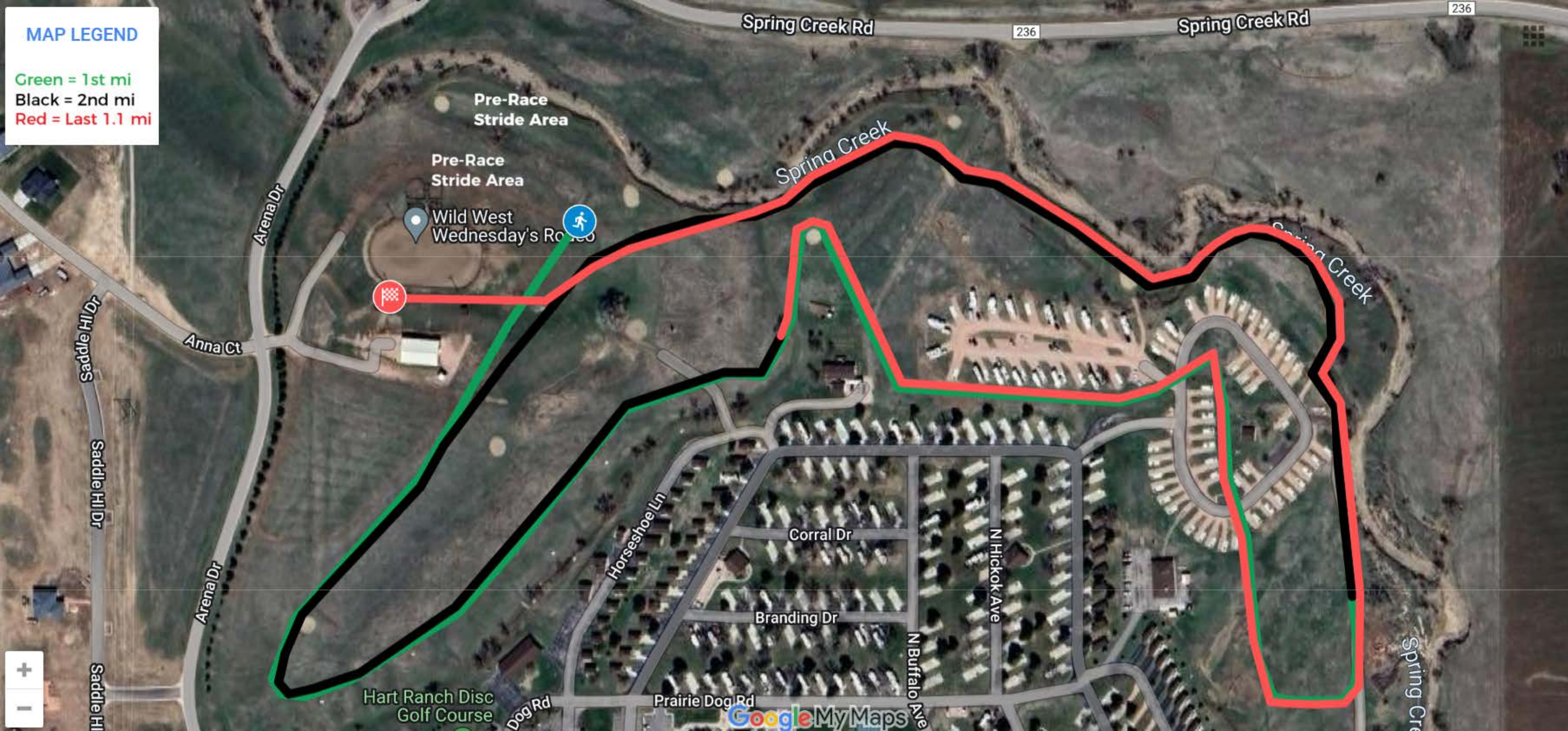


MAP LEGEND

Green = 1st mi

Black = 2nd mi

Red = Last 1.1 mi





2024 SDHSAA Cross Country



Championships Participating School Information

Welcome to Rapid City and to the 2024 State Cross Country Championships to be held at Hart Ranch Camping Resort outside of Rapid City on Saturday October 26, 2024. Please review the following information:

1. **Directions to HART RANCH CAMPING RESORT, PARKING AREAS for ALL School vehicles, and Spectators:**

We ask that all vehicles exit Rapid City Southbound on SD Highway 79, turn right onto Spring Creek Road for 1.5 miles to entrance. ([Click here for map](#))

a. **School Bus/School Van/Suburban Parking** will park at Rapid City Christian High School on **SATURDAY**. On Friday, school buses will be asked to park in the designated lot. ([Click here for map](#))

b. **Spectator Parking** will take place in the designated parking areas at Hart Ranch Camping Resort. ([Click here for map](#))

2. **Directions leaving HART RANCH CAMPING RESORT, PARKING AREAS for ALL School vehicles, and Spectators:**

We ask that as you leave Hart Ranch, you turn left and go west on Spring Creek RD for approximately 3 miles to Neck Yoke RD which will take you to a right hand turn onto Highway 16 north into Rapid City. ([Click here for map](#))

3. **Course Availability:**

The Course will be available for team walk throughs from **3:00 p.m.-5:00 p.m. (MDT)** on Friday October 25, 2024. ([Click here for course map](#))

(PLEASE DO NOT SHOW UP AT THE COURSE PRIOR TO THIS TIME.)

4. **Check In:**

Check in will be located at the tournament headquarters trailer next to the finish line on Friday from 3:00-5:00 p.m. (MDT). Check in on Saturday will be from 10:00 am – 12:00 pm. ([Click here for map](#))

5. **Team Camps:**

Will be available at the designated area. ([Click here for map](#))

6. **Restrooms:**

Portable Restrooms will be located near the starting line, team camps, and the finish line.

7. **T-Shirt Vendor Area:**

Official State Cross Country Meet t-shirts will also be available near the finish line. ([Click here for map](#))

8. **Training Area:**

The training area for athletes will be located near the finish line corral area. An ambulance will be located near the finish line. ([Click here for map](#))

9. **Finish Line Corral:**

Finish line corral is for participants ONLY. Coaches and spectators ARE NOT allowed inside the finish line corral. ([Click here for map](#))

10. **Awards Area:**

Awards will be distributed near the finish line. ([Click here for map](#))

11. **Results:**

Results for the races will be posted at Dakotatiming.com.

Meet Schedule

12:00 p.m.	Class B Girls
12:30 p.m.	Class A Girls
1:00 p.m.	Class AA Girls
1:30 p.m.	Class B Boys
2:00 p.m.	Class A Boys
2:30 p.m.	Class AA Boys