

South Dakota High School Activities Association

2009 VOLLEYBALL NEWSLETTER



Please send unusual situations and topics for this newsletter to: jo.auch@sdhsaa.com

#5: October 6, 2009

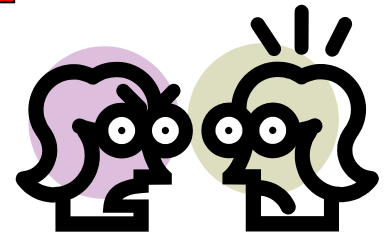
OFFICIALS ARRIVAL TIME

Officials need to be at their place of destination a minimum of 30 minutes prior to the start of the match. Always have a pre-match and post match conference with you officiating partner.



COACHES STANDING BY LINE JUDGES

Coaches: It seems some of you are taking your privilege of standing to coach your team, as an opportunity to "help" or "express your concern" about a call the line judge has made! This is not the purpose of you standing. The purpose is for you to coach your team.



Officials: the line judges are a part of your team and should be protected from situations like this, by issuing a yellow or red card.

"YOU MAKE THE CALL"

This is a new item in the newsletter this week. Use "control + click" on the "You Make the Call" link below and view a controversial call. What would you call on this play? Send your responses to: jo.auch@sdhsaa.com I will tally the responses and publish the call in the upcoming newsletter.

[You Make The Call](#)

USE OF CELL PHONE AND ELECTRONIC DEVICES BY COACHES AND BENCH

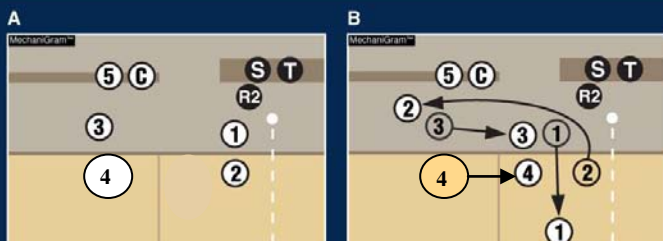
Coaches: In my last newsletter, when I referenced that assistant officials such as scorekeeper, libero tracker, timer and line judges should not be using cell phones and electronic devices, I did not anticipate that I would have to state that **coaches and/or other bench personnel** should not be using them during the match either. These items should be put away and not used from the start of the match until the match has ended for the evening. Thank you for your assistance on this matter.



SUBSTITUTION ZONE



Procedure for Multiple Substitutions Rule 10-2-3



In A, the first pair of players involved in substitution are substitute #1 and outgoing player #2. The second pair, #3 and #4, wait outside the sub zone. In B, the second substitute moves into the substitution zone as the preceding substitute has been released to enter the court and outgoing #4 moves up to the sideline.

When substituting, note that players should enter the sub zone **ONE PAIR** at a time. The others pair(s) should remain outside the subzone lined up by the nearer sideline and awaiting their turn to enter the sub zone as indicated in the Play Pic. Notice how #3 and #4 are standing outside the sub zone and move into the zone after the first pair have been given the authorization to enter. (toll booth effect)

RECIPE FOR SUCCESS

On a 30 X 60 court, mix the following ingredients:

- A pinch of politeness
- A touch of trustworthiness
- A cup of caring and cooperation
- A filling of fairness
- A heap of hard work
- A dash of diligence
- A realm of respect

Mix it all together and ENJOY!

